



**7.1.3: Quality audits on environment and energy regularly undertaken by the Institution. The institutional environment and energy initiatives are confirmed through the following**

**1. Clean and green campus initiatives**

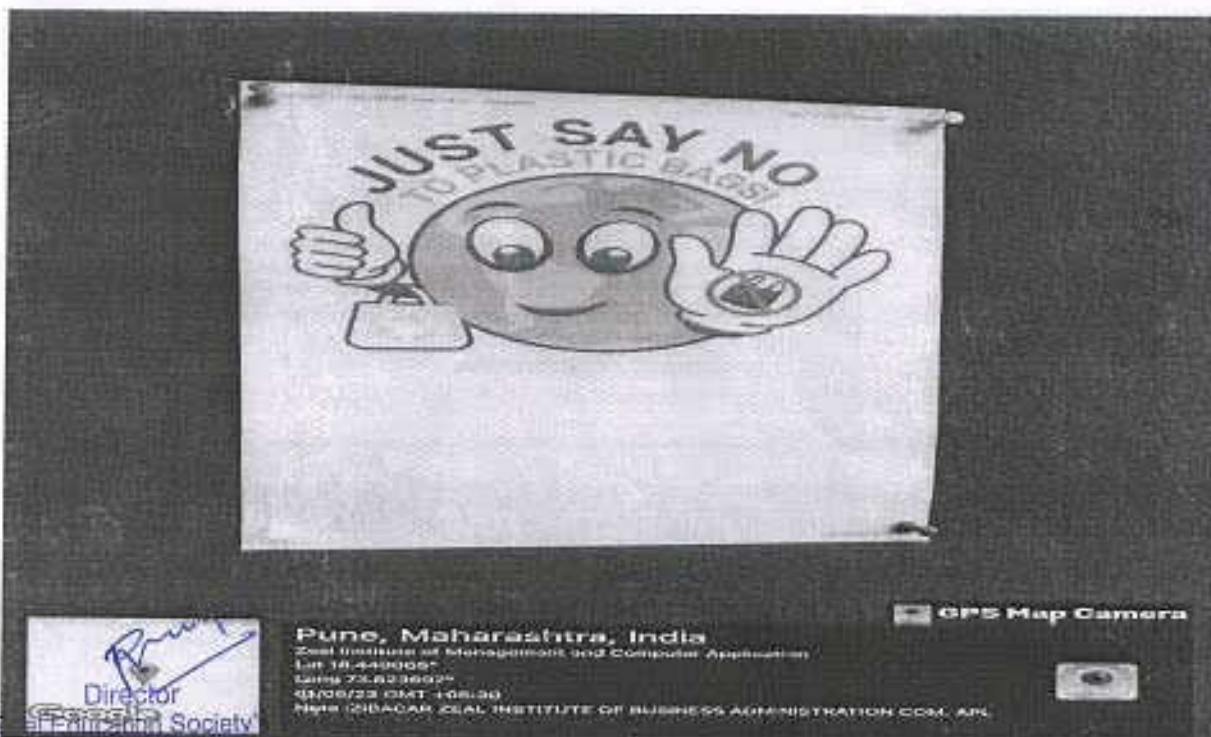
**GREEN AND GREEN CAMPUS INITIATIVES INCLUDE:**

The institutional initiatives for green campus are as follows:

- Ban on use of Plastic
- Paperless Office & Communication
- Landscaping with trees and plants
- Pedestrian Friendly pathways
- Watering & cutting of Plants
- Saving Electricity
- Use of different Disposable bins for segregation of waste in campus
- Various awareness practices & activities among students

**BAN ON USE OF PLASTIC**

The institute has taken various initiatives to restrict the use of plastic in campus. Plastic tea cups and glasses replace with steel glasses in the campus. The staff and students are informed to use steel or copper water bottles instead of plastic bottles.





*Picture of Notice regarding ban of use of plastics*

### PAPERLESS OFFICE AND COMMUNICATION

The Institute has a commitment to reduce the usage of paper in all forms of official and academic communication by using electronic communication. Digitization significantly reduces the use of paper. To save paper waste, blank papers with one side are utilized. All college staff members now have access to college email accounts, which they use for all necessary official and academic communications. Use ERP and WhatsApp in order to limit the amount of paper used in notices and circulars; groupings have been developed based on classes, departments, and committees for feasible communication.





*Screenshot of EPR page showing ERP being used for course plan, attendance, leave etc.*





### LANDSCAPING WITH TREES AND PLANTS

The institute has taken an utmost care to develop and maintain green landscaping by trained gardeners and supervisor. The institute authorities are taking initiatives to make the campus clean green healthy for all. There is a lawn and garden at the compound and there is variety of trees within the campus and in the neighborhood of the Institute. Well-coordinated efforts have been taken for the development of as a part of social responsibility, maintaining eco-friendly environment is our prime duty.



*Picture of green and clean environment at the Institute*





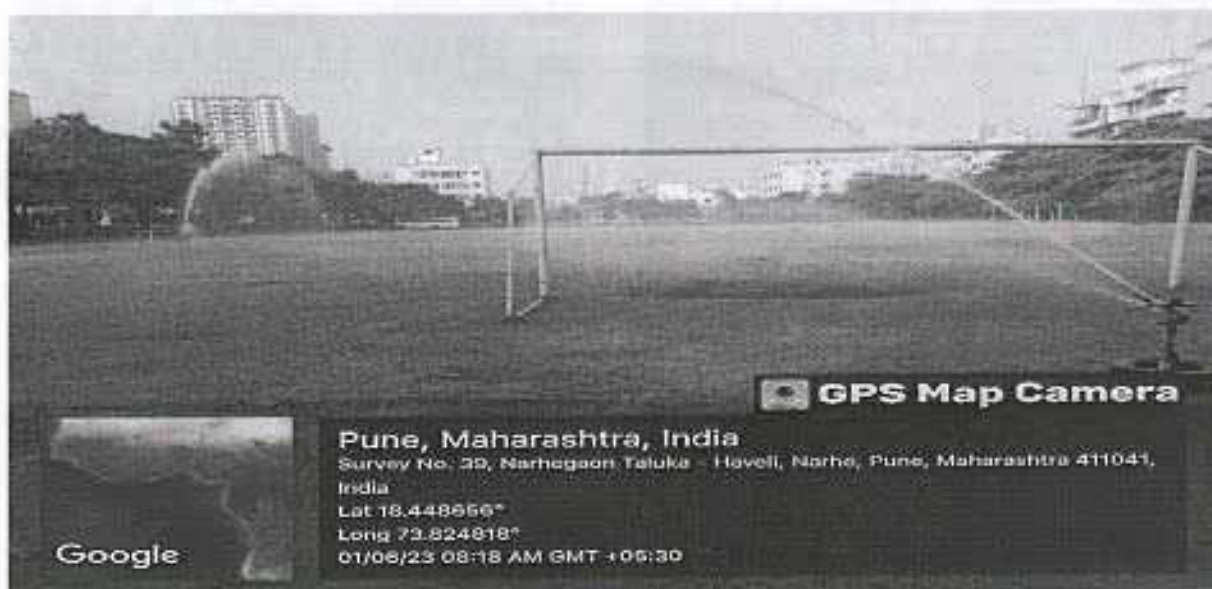
## PEDESTRIAN FRIENDLY PATHWAYS

Institute has also created pedestrian-friendly pathways for fostering walkable communities, promoting health, reducing traffic congestion, and enhancing the overall quality of life. Integrating landscaping with trees, shrubs, and flowers to create an aesthetically pleasing environment. By incorporating these elements into the design and maintenance of pedestrian pathways, communities we create safer, more accessible, and enjoyable environments for people to walk and connect with the surroundings.



## WATERING & CUTTING OF PLANTS

Institute believes in Watering and cutting, or pruning, are crucial aspects of plant care that contribute to the overall health, appearance, and productivity of plants. Plants also need optimal care for their maintenance and therefore watering and cutting/pruning can promote healthy plant growth, enhance the aesthetic appeal of the garden, and prolong the life of the plants.



*A picture of sprinkler being used for watering plants and tress.*



## USE OF DIFFERENT DISPOSABLE BINS FOR SEGREGATION OF WASTE IN CAMPUS

Institute follows waste segregation system in campus using different disposable bins is an excellent way to promote recycling, reduce landfill waste, and create a more environmentally friendly environment.

- Recyclables (Blue Bin) -For paper, cardboard, glass, metal, and plastic containers that can be recycled.
- Organic Waste (Green Bin) -For food scraps, kitchen waste, and other organic materials suitable for composting.
- General Waste (Red Bin) - For electronic waste such as batteries, old cell phones, and other small electronic devices. For non-recyclable and non-compostable items like plastic wrappers, disposable cutlery, and other non-biodegradable materials.

Dustbins at strategic locations across the campus, including near classrooms, cafeterias, libraries, and outdoor spaces. Use clear and visually appealing signage to indicate the types of waste accepted in each bin. Implementing a comprehensive waste segregation system not only reduces the environmental impact of campus waste but also fosters a culture of sustainability and responsible waste management within the campus community.





*Photograph showing typical segregated solid waste collection system*

#### SAVING ELECTRICITY

ZIBACAR also takes an initiation towards saving electricity as it is not only helping reduce utility bills but also contributes to environmental conservation by lowering energy consumption. We have developed a habit of turning off lights when we leave a room. Utilizing natural light during the day by opening curtains and blinds. This reduces the need for artificial lighting. Institute also makes sure that all faculty members and students turn off computers, monitors, and other electronics when not in use. By incorporating these practices in daily routine and making energy-efficient choices, we are significantly reducing the electricity consumption and contribute to a more sustainable and cost-effective lifestyle.



*Picture of note near switch board*



### VARIOUS AWARENESS PRACTICES & ACTIVITIES AMONG STUDENTS

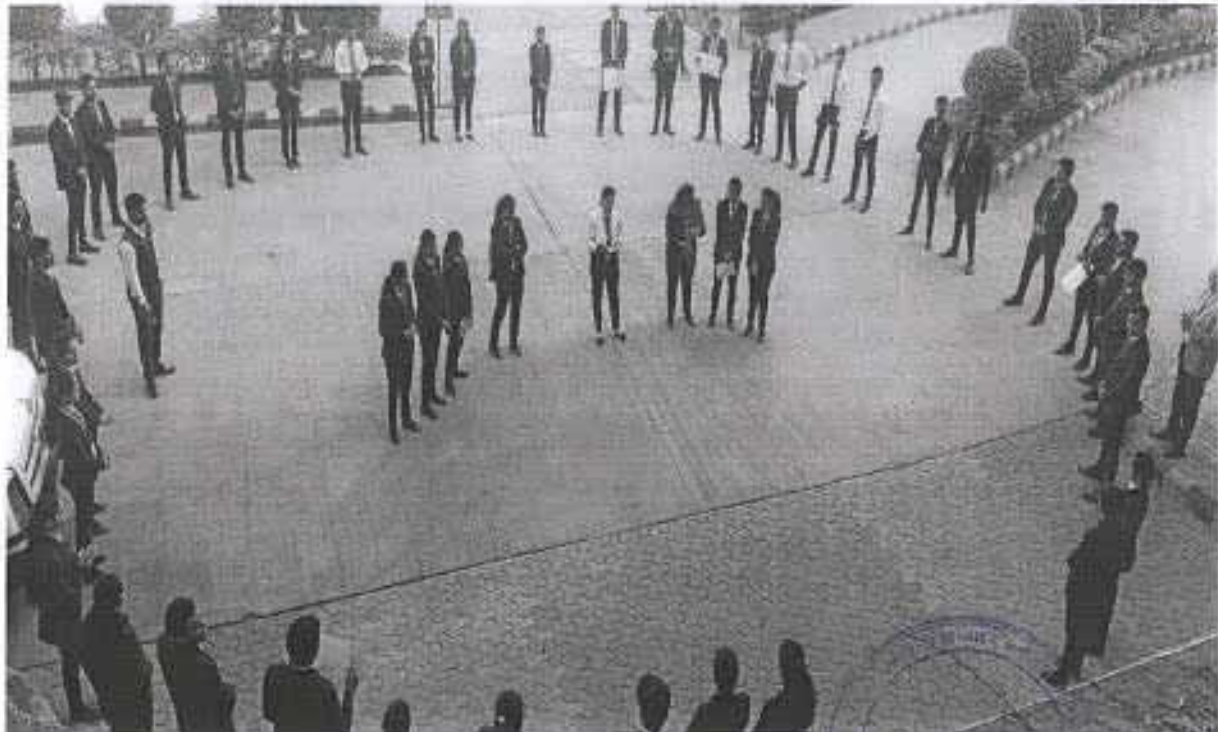
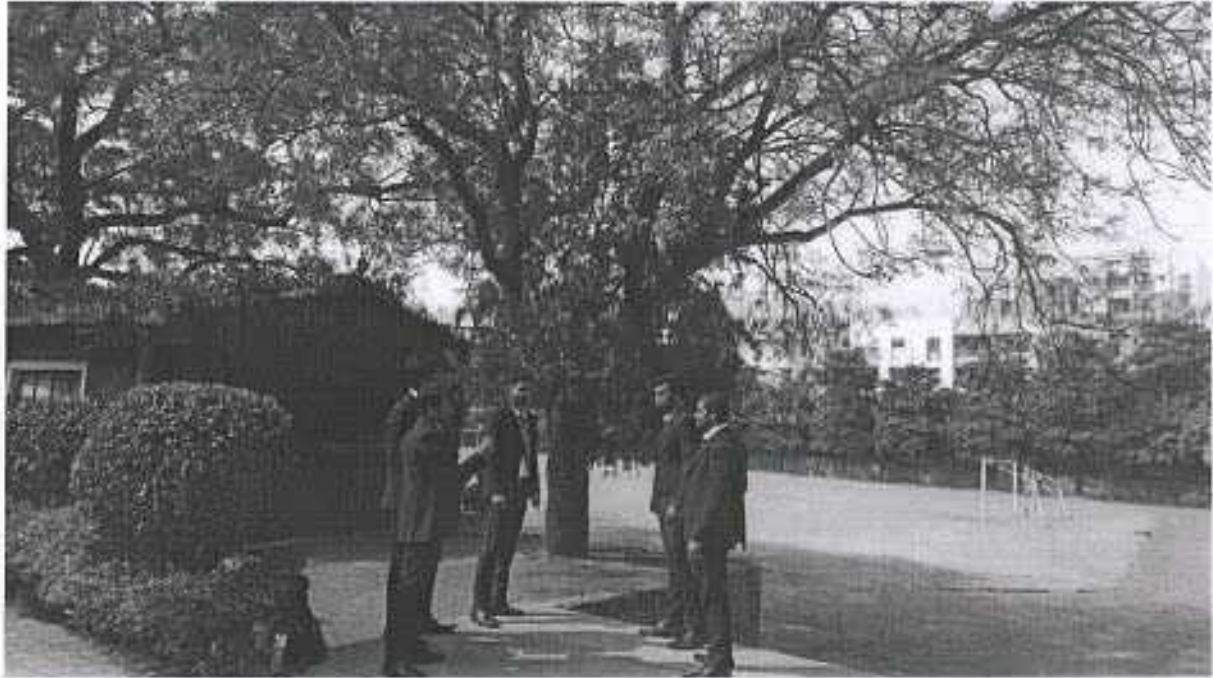
o A gift of Plant:

Institute follows a regular practice of gifting a plant to any external expert, trainer who visits the campus. With this we make sure that awareness is not only restricted to campus but beyond the campus as well. We follow this as "Go Green" awareness practice in our Institute.



*Picture of gifting a plant to visitor and guest*

- Street Play on Awareness of environment:  
ZIBACAR believes that street play is a creative and engaging way for students to raise awareness about environmental issues. Our students also actively plan and executes street play on environmental awareness every year in the campus.



*Pictures of street play conducted by students regarding environmental awareness*



o Activity: Selfie with Plants:

Taking selfies with plants can be a fun and creative way to celebrate nature, promote environmental awareness, and share your love for plants. We encourage students to appreciate the beauty of greenery, a plant-themed selfie activity that can be a delightful way to connect the love for nature.



*Pictures of the activity; Selfie with Plants*



o **Cleaning of Campus:**

Cleaning the campus is an important task to maintain a healthy, aesthetically pleasing, and safe environment for students, faculty, and staff. Students are given cleaning the campus activity for create awareness for clean green and healthy environment.



*Picture of cleaning the campus*

